



# SPRINT POWER JIG

DIMA UNIVERSALE  
Sprint Power JIG



È un sistema di misurazione manuale che con l'ausilio di schede tecniche si può riparare qualsiasi autovettura incidentata.

Nella versione standar viene fornita con 5 traverse, 10 basi, 12 sfilanti. Kit di rampe (n°2 di salita - n°4 di posizionamento) varie testine, boccole e bulloni.

Per la misurazione degli ammortizzatori c'è il MC PHESON (OPTIONAL).

È adattabile su tutti i banchi Termomeccanica (Galaxy - Super global star - Masterbench).

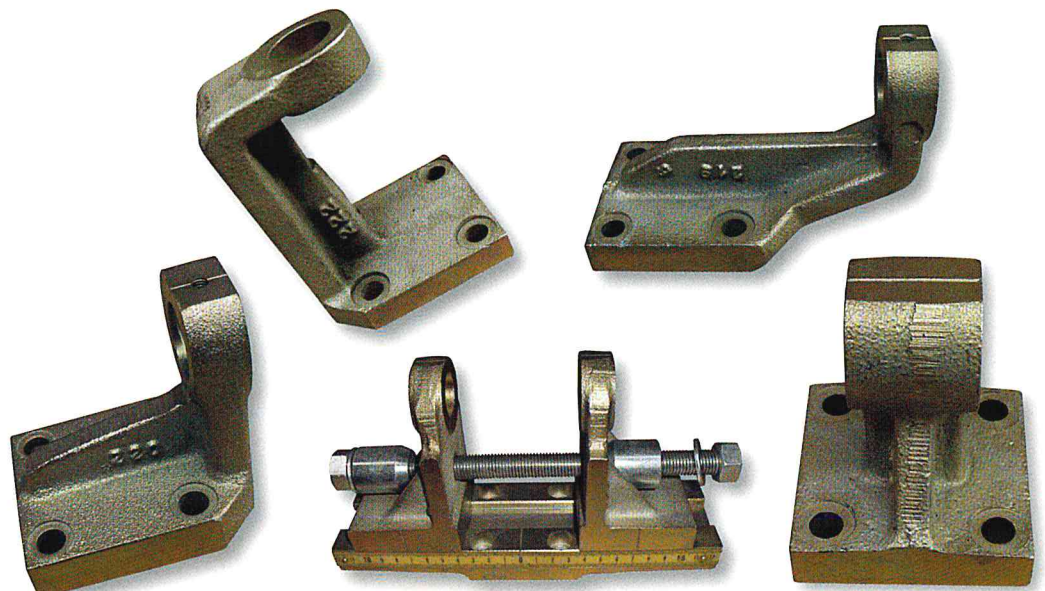
*It is a hand measuring system that can repair any crashed car with the help from tech sheets.*

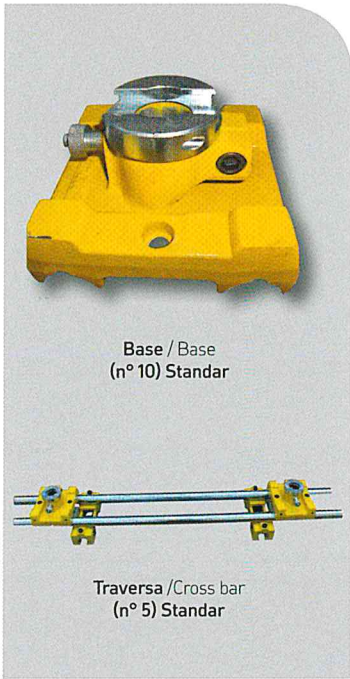
*The standar version is formed by five (5) cross-bars, ten (10) bases, twelve (12) head supports and one (1) kit of ramps (two (2) drive-on ramps + four (4) positioning ramps), several heads, bushings and bolts.*

*To measure the shock absorbers the McPherson is required (OPTIONAL)*

*Can be mounted on the following benches manufactured by Termomeccanica: Galaxy - Super Global Star 360° - Masterbench*

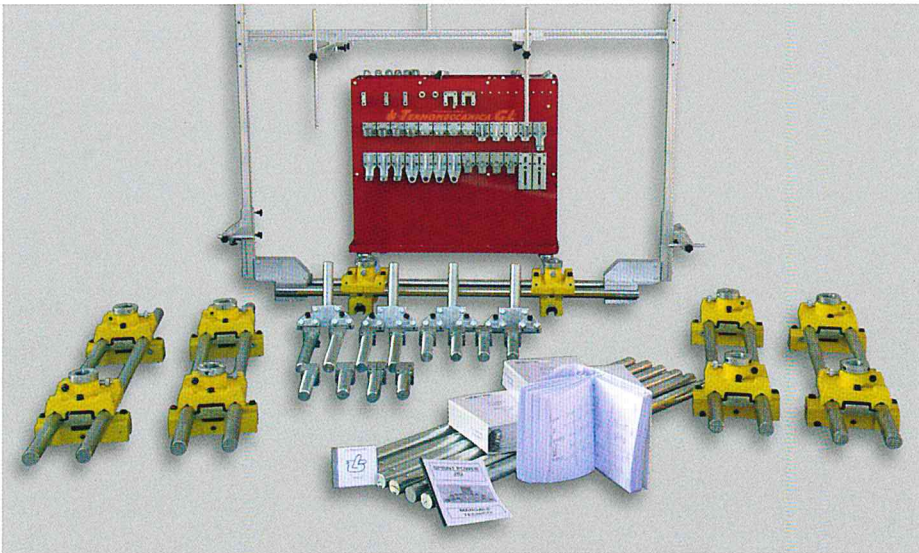
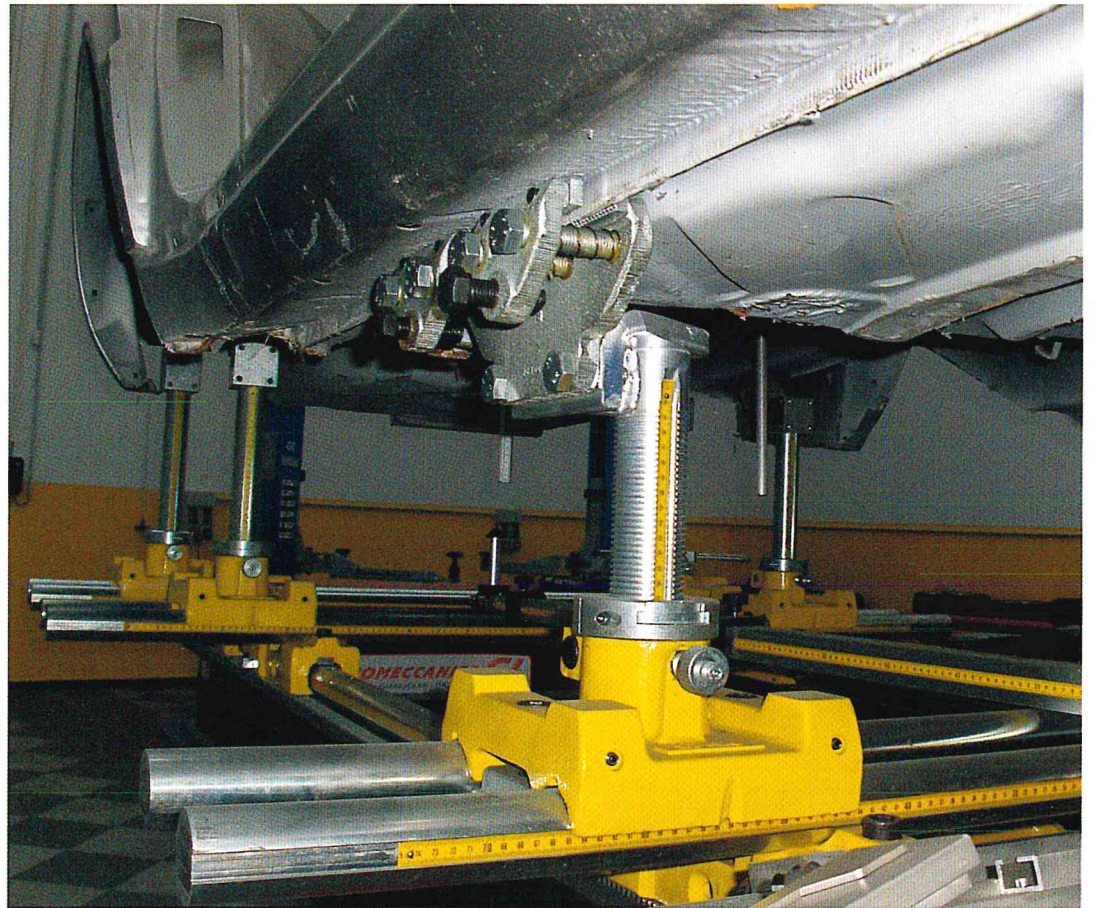
## TESTINE PER ANCORAGGIO GENERALE / Head for standar anchorage



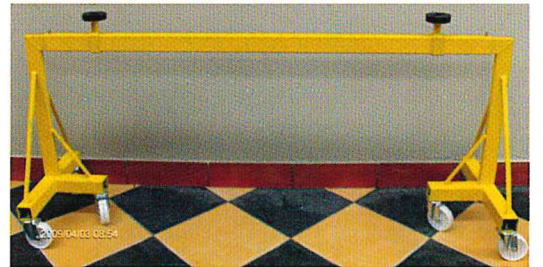


Base / Base  
(n° 10) Standar

Traversa / Cross bar  
(n° 5) Standar



Dima universale / Universal JIG



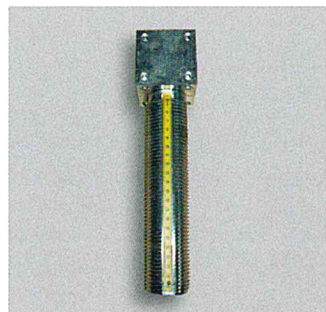
Carrello porta vettura / Vehicle supporting carriage



Accessori / Accessories



Carrello porta dima / Subsidiary JIG trolley



Sfilante/Vite senza fine / Worm Gear



Occhiolo / Small turning donuts



Prolunga per intercubi / Extension for intercube

I presenti dati e le misure non sono impegnativi.

La Ditta si riserva di apportare modifiche in qualsiasi momento senza ulteriore avviso.

Technical information is purely indicative. Termomeccanica reserves the right to make changes without any further notice.

**TERMOMECCANICA GL**

via Luciano Giangolini  
42035 Felina - Castelnuovo ne' Monti  
Reggio Emilia - Italy  
tel.: +39 0522 1848411 - fax: + 39 0522 1848440  
mail: info@termomeccanicagl.it  
www.termomeccanicagl.com

